

Meet the team



Our mission is to serve and support schools and churches. We constantly strive to do more, so that through and with you, the distinctive Church of England character of your schools will continue to be developed.

Please contact us if there is anything you might like us to do or if you have a query about anything. We would love to hear from you.

Dr Rex Pogson



Chair of the DBE

Mrs Linda Wainscot



Diocesan Director of Education

Mrs Rachel Williams



PA to the Director & Clerk to the DBE

Mrs Chris Mulley



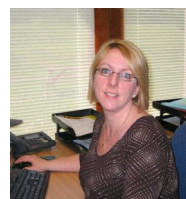
School & Governor
Development Officer

Mrs Lizzie McWhirter



RE, Spirituality & School Officer

Mrs Joanne Evans



CPD Administrator

Mr Jonathan Warren



YMD Boon—VA Schools
Property/Buildings Consultants

Mrs Helen Barnwell



Consultant Governor Support Officer

Mrs Alison Farnell



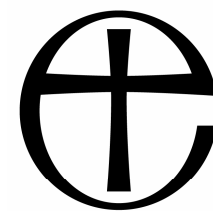
Consultant DBE Training Manager

CONTACT DETAILS

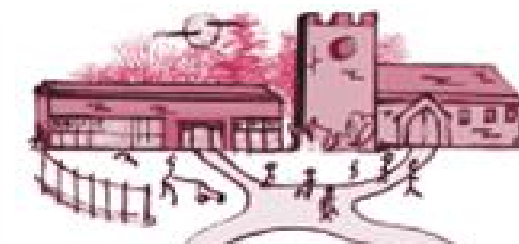
Diocesan Board of Education
1 Hill Top
COVENTRY CV1 5AB

Telephone 02476 521250

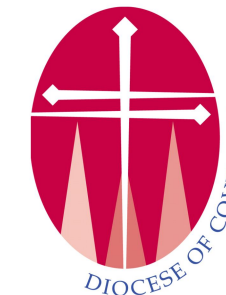
email: firstname.lastname@covcofe.org



THE CHURCH
OF ENGLAND



Supporting and Serving
School and Church



Happy New Year!

As we start this spring term, I pray that 2010 will be a great year for you—both personally and professionally.

We're also at the start of a new decade, and there's much talk in the media of the search for personal happiness taking centre stage rather than the drive to acquire things or do stuff. In schools, the Every Child Matters agenda is now well embedded, and our Church schools are communities which place the wellbeing and happiness of every child at their very heart...

Over Advent, Chris Mulley read Margaret Silf's book, "Lighted Windows", subtitled "An Advent Calendar for a World in Waiting". With a Governor newsletter to write, she was startled to read this verse from the Bible:

2 Corinthians 3:3

You are a letter of Christ...written not with ink but with the Spirit of the
Living God, not on tablets of stone but on tablets of human hearts

The thought that we might be letters of Christ, whom He is sending to the world makes me wonder what kind of letter we'll be...Will we be of the routine variety - easily discarded and not making that much of a difference or will we be a welcome personal communication, with a shared history and aspirations for the future.?

In employing the gifts and skills you do, day in day out as a headteacher in a Church of England school, have you ever considered that God has called you to be a living Christian witness in your community? He sent you to be His message—a message of love and commitment, continually seeking to empower and equip others in His name to be the best they can be. There's no room to settle for less than the best! It's what you are and who you are, as much as what you do, that makes the difference.

When, as a headteacher, you have tough decisions to make, this poem may be useful:

IN CHRIST WE HAVE

*A love that can never be fathomed;
A life that can never die;
A righteousness that can never be tarnished;
A peace that can never be understood;
A rest that can never be disturbed;
A joy that can never be diminished;
A hope that can never be disappointed;
A glory that can never be clouded;
A light that can never be darkened;
A happiness that can never be interrupted
A strength that can never be enfeebled;
A purity that can never be defiled;
A beauty that can never be marred;
A wisdom that can never be baffled;
A resource that can never be exhausted.*

2 Timothy 3:16

All scripture is God-breathed

DIOCESAN BOARD OF EDUCATION

Headteacher Newsletter January 2010

ANON

Linda Wainscot



200th
Anniversary of
the
National Society



2011 will be the 200th Anniversary of the National Society.

When it was founded in 1811, the National Society's aim was that "the National Religion should be made the foundation of National Education": education for all, firmly based on the Christian Gospel and Anglican principles. With prodigious energy, the Society established a national system of education, supplemented by the State from 1870 onwards. Five thousand Church of England and Church in Wales schools, educating almost a million children and young people, are the heirs of that proud tradition. Today, Church schools have effective support from many national and local bodies including LAs and Diocesan Boards of Education. But The National Society still exists to inform and encourage Church schools throughout England and Wales and to promote Christian education. It does so through careful reflection on the needs of Church schools and through targeted innovation.

Please see some ideas enclosed for you to develop as part of your own special celebrations. As part of a special year long Cross of Nails pilgrimage, every church school will host the Cross of Nails for two or three days. Do look at the proposed timetable to see when your school will receive the Cross of Nails and when you will hand it on to the next school. Why not take the opportunity to have a special church service and invite some representatives from your local community school? Do put 29 November 2011 in your diary when there will be a Service of Thanksgiving and Rededication in Coventry Cathedral at 11 am.

More news nearer the time!

I do hope and pray you will catch the vision and begin to develop creative and exciting plans for your school to play its own unique part in our story.

Enjoy planning your events in 2011 and please do let us know what you are planning! The DBE look forward to celebrating with you at some of your events.

CPD

Heads will have received a letter outlining the amount of money that remains unspent in your Diocesan Service Agreement for this financial year. So consult the current GREEN CPD booklet which outlines the courses planned for this spring term and decide how best to use up your allowance. There is currently space on the following courses (one or two are nearly full, so don't delay applying):

- 19th January 2010** Being a Governor in a Church school – an essential introductory session for governors
- 28th January** Introducing the new SIAS Toolkit – if your school has not already attended one of these courses, you will find it very useful
- 2nd February** Confidently and Appropriately Distinctive – for heads and governors to consider what it really means to be a distinctive Church school
- 24th February** Churches working in partnership with schools – exploring different ways to make this essential partnership effective
- 25th February** Sparking up your RE! – lots of creative ways to improve the way RE is taught in your school

Special events in Spring Term 2010

For VA schools 9th February 2010

Visions for the Future – Developing VA School Buildings and Realising Potential

For staff who aspire to leadership in a Church school

Stepping Up and Standing Out! – A day to explore whether you might step up to leadership in a Church school, and maybe to then consider applying for the 2011 Post Graduate Certificate in Church of England School Leadership



Coventry Diocese's First Governors' Conference

In response to requests from governors, we have arranged the first Diocesan conference specifically focussing the governors' monitoring role in relation to the distinctive Christian character of the school.

Saturday March 6th 2010 9.30am - 12.30pm

Developing the Distinctive Christian Character of a Church of England School - The Governors' Role in supporting and monitoring this

(This topic has been changed from that originally advertised)

Keynote Speaker: Mike Simmonds

We suggest that at least 2 governors attend the conference together for maximum benefit. The fee is reduced when 3 governors from the same school attend.

Post Graduate Certificate in Church of England School Leadership

You will now probably be aware that in 2010, Coventry Diocese is running the Church of England pilot of this one year course, validated by Liverpool Hope University. We have 12 participants enrolled for the pilot course; the major planning is complete, mentors for most of the participants have been trained, and we will soon be approaching Heads in Diocesan schools to act as host schools for visits by the participants. The course kicks off on January 12th. Do pray for the course leaders, speakers, mentors, school visit heads and participants throughout the year. And be considering now, which of your staff might apply for the course in 2011. Information inviting expressions of interest for those places will be sent out in the summer term 2010.

DIOCESAN SERVICE AGREEMENT

And do please remember the facility to offset the cost, excluding transport, of visits with your children to Coventry Cathedral. Where the Schools Team makes a charge for this, this can also be offset against the school's entitlement. For further details, please contact Chris Mulley.

In 2009/10 82% of the church schools in the diocese (61 out of 74) have subscribed to the Service Agreement and are receiving DBE support relative to their Christian distinctiveness in keeping with their school improvement agenda. Please look out for the letter which will be sent to you shortly advising how much of your school's entitlement you still have available until 31st March 2010, and do please contact us to get maximum value for your subscription. Any CPD courses or other support which is booked and offset against your school's entitlement (or invoiced at half price if above that level) can be delivered up to the end of April 2010 before the 2009/10 entitlement lapses.

The terms of the 2010/11 Service Agreement are unchanged and will be posted out to you around half term to allow plenty of time for you and your governors to come to a view about subscribing for another year. The overwhelming feedback from schools is of how much they value the DBE and the support which is available, so we trust and pray that you will want to resubscribe in similar numbers!

1 Corinthians 12:27

Now you are the body of Christ and each one of you is a part of it

A personal note from Chris

Chris will be running her first ever marathon, the Virgin London Marathon on April 25th 2010. She has started the training, is strangely excited about it and would love to raise as much money for The Children's Society in the process as possible. If you would like to sponsor her for this worthwhile cause please visit www.justgiving.com/chrismulley

She'd really appreciate it.



St Bartholomew's Coventry



St. Bartholomew's School in Binley are working in partnership with the Divine Inspiration project at the Diocese of Coventry and have been selected as a **national flagship** project for this year's 'Engaging Places'. Engaging Places champions teaching and learning through the whole built environment, from grand historic buildings to the streets and neighbourhoods where we live. It is a strong supporter of 'Working outside the Classroom'.

Brian Close, the Deputy Headteacher at St. Barts is preparing his year 3/4 class for an exciting exploration of two very different churches in our Diocese - St. Bartholomew's in Binley and St. John Baptist in Berkswell. Helen McGowan, the Church Buildings Support Officer who manages the Divine Inspiration project says:

"Experience of the built environment for many children is limited. City shops, fast food outlets and sports venues may be the only places they can draw on when relating to their surroundings. Exposing these children to the reasons why our faith buildings are the way they are, what the decoration and symbolism means and the kinds of materials that are used to create these landmark spaces will hopefully open their eyes to wider possibilities. Brian is already preparing them for their site visits by taking them into the City to look at shapes and styles of architecture, not just in churches." Helen and Brian attended a workshop in Southwark Cathedral before Christmas. For more information or ways in which your school could be involved please contact us.

There will be a 'Cross of Nails Pilgrimage' around the diocese beginning its journey at 'The Harris', resting in each of our diocesan schools and ending at 'Blue Coat' where it is then taken to the Cathedral on 29 November 2011 for a 'Service of Thanksgiving and Rededication' attended by 6-10 students from each school, representative headteachers, staff, governors and clergy. Bishop Christopher will be sharing in our anniversary celebration of thanksgiving on 29 November 2011 in Coventry Cathedral at 11 am. At this service Church of England school banners will be re-dedicated and a new diocesan school banner will be dedicated.



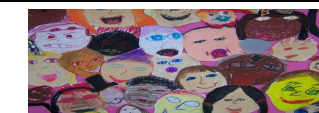
Schools will be asked to focus their worship and other activities on the Cross of Nails for the few days it is in their school. Maybe you will want to focus on what the Cross of Nails means to you with cross curricular work on peace and reconciliation?



Schools and parishes will be asked to work together for these times of celebration and worship together in school or church. Might local community schools be invited to be involved in some way? They could be invited along to a church service.

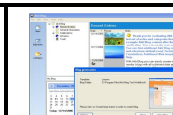
Might schools be able to develop or share their work through international links?

Which parts of the world does your school already have a link with? Share your ideas.



Could each of our schools carry out 'an act of Christian kindness' in their community, demonstrating their distinctive character? Why not work with your local faith communities? Can you find ways to support local initiatives?

We hope to set up an on-line diary/blog to be completed by each school for the duration of its hosting of the Cross of Nails? What will your entries look like?



We are considering whether it might be possible to commission a local author to produce a book/resource/website materials as a result of the pilgrimage activities? This will provide a wonderful record of our celebration activities.

Each Church of England School will be asked to complete a heritage sheet to give a complete 2011 diocesan picture? What might yours look like?



14th October 2011 - A service of thanksgiving in Westminster Abbey where some of you will be able to represent the Diocese of Coventry - it could be you! Her Majesty the Queen will be attending this service. Maybe you could hold your own service in church or school at the same time?

DBE PASTORAL LINK VISITORS

The DBE is extremely thankful to its committed DBE Visitors who have been ably led by Mrs Sybil Hanson over the years. Feedback from headteachers proves that relationships have been forged and personal and professional care demonstrated.

We aim to offer distinctive support to our Church of England Schools and new developments take account of all that is good in current practice whilst seeking to enhance what is provided.

DBE PASTORAL LINK VISITOR SCHEME

1. All Diocesan Schools will be assigned a Pastoral Link Visitor;
2. Volunteers with appropriate experience and a willingness to undertake the role may be invited by the DDE to support a mutually agreed number of schools;
3. Pastoral Link Visitors will work in accordance with the agreed protocol (Appendix 1);
4. A DBE Officer or Consultant will take the lead in co-ordinating the scheme and will be responsible for (i) communications (ii) maintaining the database and contact details (iii) recruiting potential new Pastoral Link Visitors (iv) convening and chairing the annual meeting of Pastoral Link Visitors (v) providing regular briefing papers and inspection reports (vi) liaising regarding visits and issues arising

APPENDIX 1

The main aim of the team of DBE PASTORAL LINK VISITORS is to foster good relationships between the diocese and its schools and contribute to the well-being of our headteachers. The following protocol represents the essential elements necessary to ensure some standardisation across both the team and diocesan schools to help achieve this aim. It is appreciated however, that the DBE Pastoral Visitor team consists of volunteers and that the time needed to develop the role and relationship with headteachers will be limited to each volunteer's personal circumstances.



The Greek word Paraklete has been translated as Comforter, Helper, Counselor, and Advocate but no single translation captures all the aspects of the Christian meaning of the word. Paraklete is composed of two root words that mean "one called to your side." It was used to describe a person who stood up with another who was on trial or under pressure. It was not a lawyer in the sense that we now think of lawyers or advocates; the paraklete didn't speak to the judge, s/he spoke with the person on trial encouraging and helping them through it.

DBE PASTORAL LINK VISITORS will:

1. Demonstrate an understanding of the values, purpose and ethos of Church of England Schools;
2. Visit their assigned schools at least twice during the school year; other visits may take place at the invitation of the school, in representation of the DDE or if the circumstances in the school suggest another visit could be helpful;
3. Understand the need for confidentiality in their dealings with schools and to respect this at all levels;
4. Have the ability to communicate effectively with senior leaders in schools;
5. Be prepared to listen sympathetically and to both share the concerns and celebrate the successes of the school;
6. Be familiar with the issues facing schools, including the requirements for RE and Collective Worship, and have the confidence to discuss these, when appropriate, with staff in their assigned schools;
7. Be able to articulate the aim and aspirations of the DBE;
8. Understand the particular pressures of headship in the educational climate and be able to recognise any signs of stress or concern;
9. Communicate to the DBE proposed timescales for visits to allow for coherence with those made by DBE officers; other information that would be helpful to officers will also be communicated
10. Have an assigned DBE officer or consultant who will convene and chair the annual meeting, issue invitations to the annual headteacher and DBE conferences, send out inspection reports and other briefing materials.

What is offered to headteachers	DBE Officers/Consultants	DBE Members/Volunteers
Support as outlined in the Service Agreement & CPD Booklet	All the DBE team	
Headteacher Recruitment	DDE & nominated others	
<u>Headteacher Induction</u>	Officers & Consultants	
<ul style="list-style-type: none"> • Half-day session in first half-term • DSA support visit in term 1 • SIAS support visit in term 2 • Headteacher peer supporter (if required) • Pastoral Link Visit in term 2 	↓	Colleague headteacher Pastoral Link Visitor

YOU WILL RECEIVE NOTIFICATION OF WHO IS TO BE YOUR DBE PASTORAL LINK VISITOR IN FEBRUARY 2010. MANY OF YOU WILL CONTINUE TO WORK WITH THE PERSON YOU ALREADY KNOW.